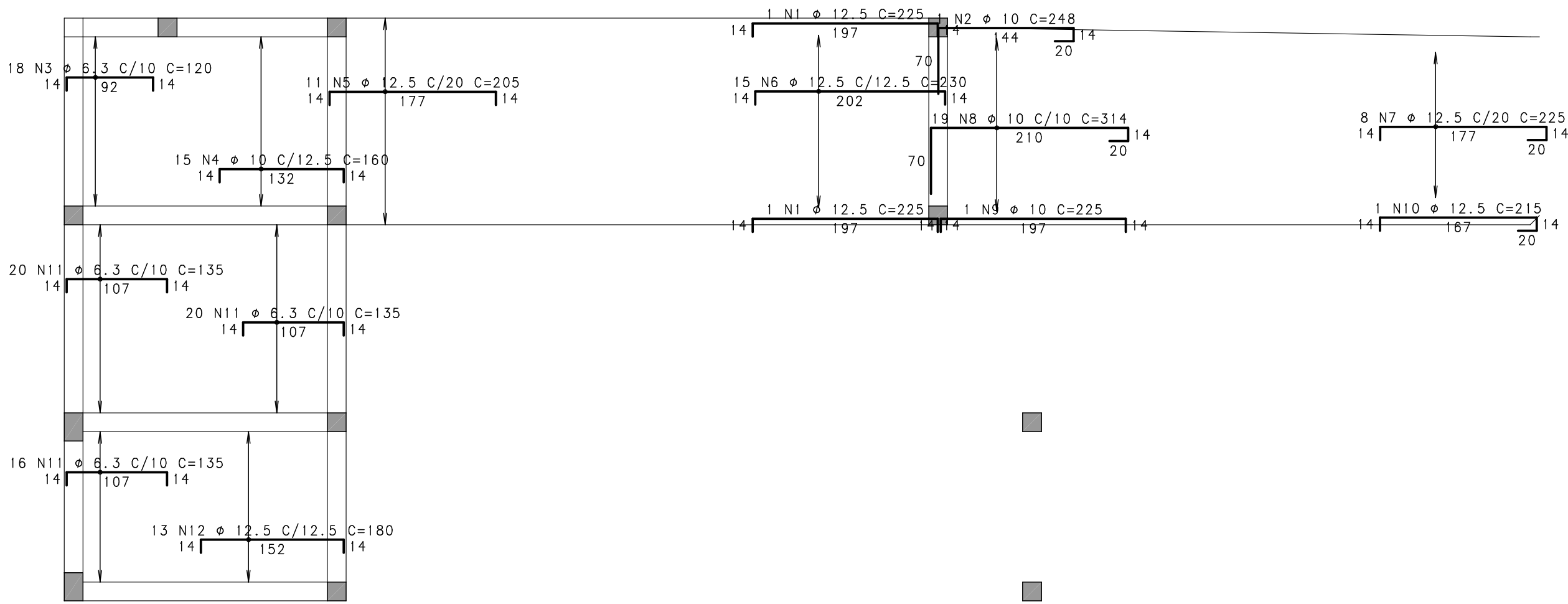
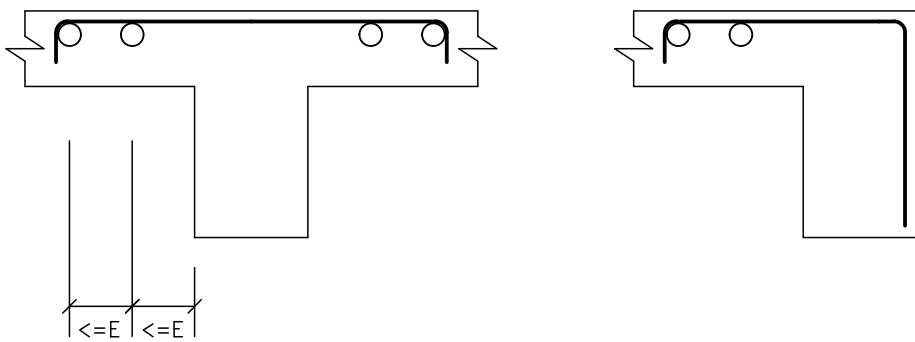


PATAMAR 03 - Armadura negativa horizontal

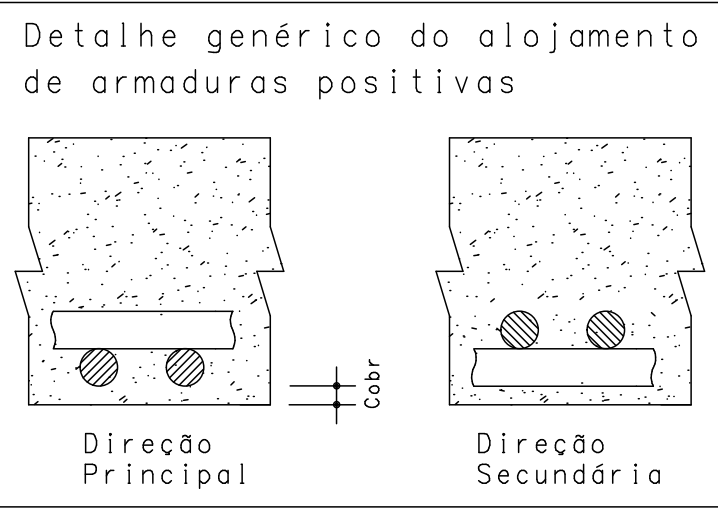
1X



DETALHE TÍPICO DE FERROS DE DISTRIBUIÇÃO DE ARMADURA NEGATIVA



7 N13 Ø 5 C/20 C=1140

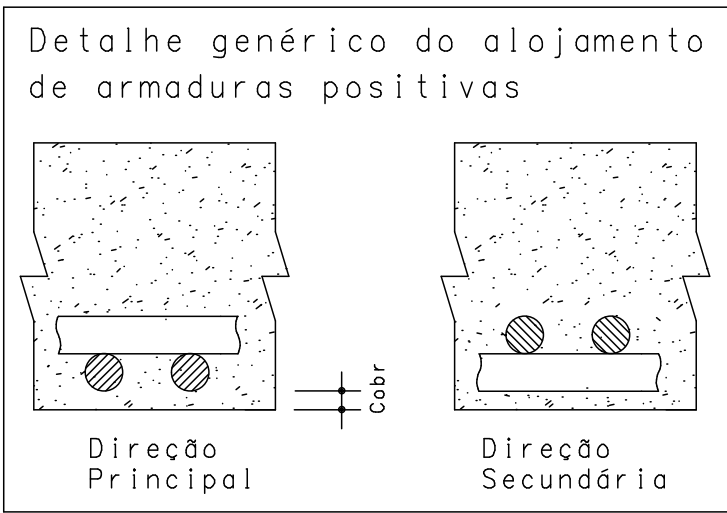
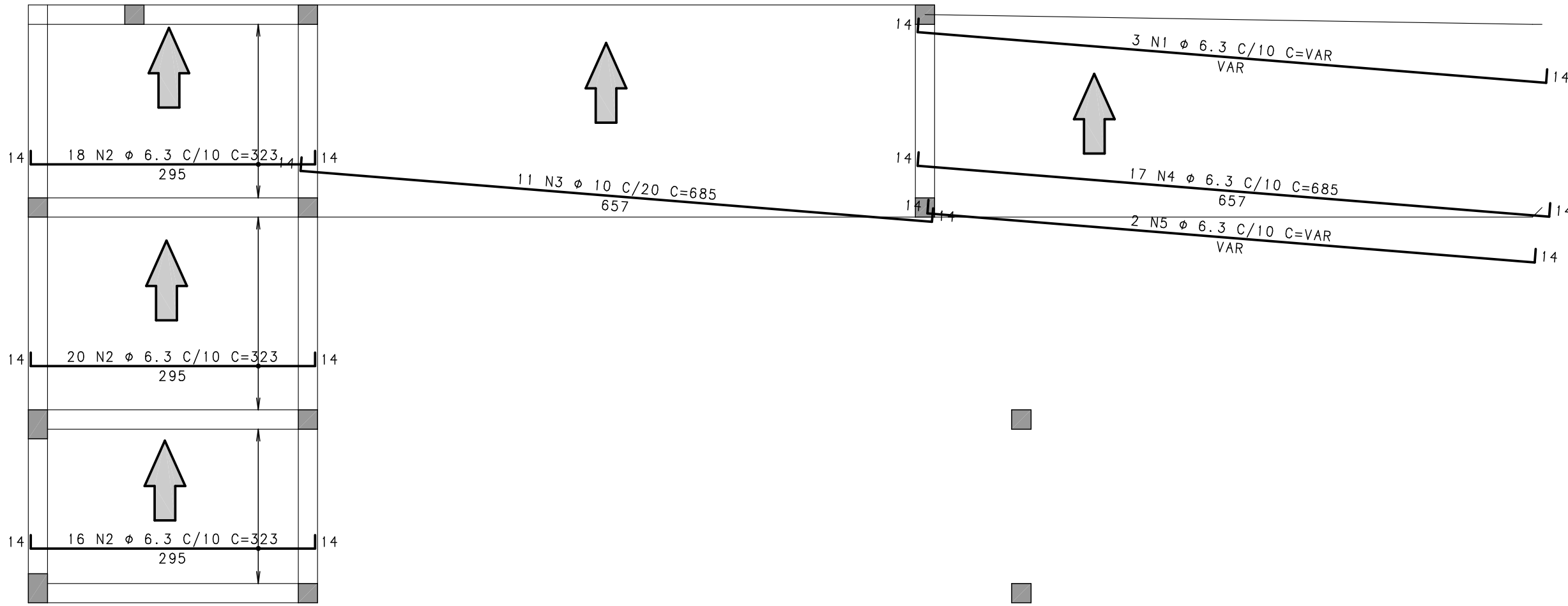


ACO	POS	BIT (mm)	QUANT	COMPRIMENTO	
				UNIT (cm)	TOTAL (cm)
PATAMAR 03 - Armadura negativo horizontal					
50A	1	12.5	2	225	450
50A	2	10	1	248	248
50A	3	6.3	18	120	2160
50A	4	10	15	160	2400
50A	5	12.5	11	205	2255
50A	6	12.5	15	230	3450
50A	7	12.5	8	225	1800
50A	8	10	19	314	5966
50A	9	10	1	225	225
50A	10	12.5	1	215	215
50A	11	6.3	56	135	7560
50A	12	12.5	13	180	2340
60B	13	5	7	1140	7980
PATAMAR 03 - Armadura positivo vertical					
50A	1	6.3	3	--VAR--	1920
50A	2	6.3	54	323	17442
50A	3	10	11	685	7535
50A	4	6.3	17	685	11645
50A	5	6.3	2	--VAR--	1340


RESUMO ACO CA 50-60			
ACO	BIT (mm)	COMPR (m)	PESO (kg)
60B	5	80	12
50A	6.3	421	103
50A	10	164	101
50A	12.5	105	101
Peso Total		60B =	12 kg
Peso Total		50A =	305 kg

PATAMAR 03 - Armadura positiva vertical

1X



fck 250. kg/cm2 - C25

 Schuring & Schuring	Schuring & Schuring Ltda. Escritorio Tecnica B.E.SCHURING - Projetos de Engenharia Av. XV de Novembro, 489 - Porto 2o. Andar - Cuiaba MT Fone: (065) 321.9959 - Fax: (065) 623.5066 - Email - schuring@terra.com.br	
PROJETO ESTRUTURAL	PROJETO:	PROPRIETARIO: PREFEITURA MUNICIPAL VARZEA GRANDE PROJETO ORLA DO PORTO ALAMEDA JULIO MULLER
	RESP. TEC. EXECUCAO:	OBRA: RAMPA DE ACESSO
	END.: Alameda Julio Muller, s/n Bairro Alameda / Varzea Grande - MT	
	AUTORES DO PROJETO:	ASSUNTO: PATAMAR 03 DET ARM LAJE
	Benedito Eliseu Schuring Eng.Civil- CREA 715/D-MT	
Andre Luiz Schuring Eng.Civil- CREA 8697/D-MT	PECAS DETALHADAS PATAMAR 03 - Armadura negativa horizontal PATAMAR 03 - Armadura positiva vertical	
FCK: 250 ESCALA: 1:50	DIREITOS AUTORAIS RESERVADOS VERIFICAR MEDIDAS NA OBRA DATA: 07/08/2018 FOLHA No:	